

# SEAPORT CENTRE

400 Chesapeake Dr | 900 Chesapeake Dr  
Redwood City, CA



[HealthpeakBayArea.com](http://HealthpeakBayArea.com)

Healthpeak® | DOC  
LISTED  
NYSE

**CBRE**



15-building campus environment  
that fosters community



Idyllic San Francisco  
Bay setting



Access to Bay Trail with scenic  
walking, biking paths and  
recreation areas



Conveniently located to  
mid-peninsula residential  
communities



Parking Ratio:  
3.0 per 1,000 RSF

# Discover New Horizons

With proximity to major academic institutions and a significant number of life science companies, Seaport Centre is Redwood City's premier, bayside business park – ideal for inspiration and innovation.

# At a Glance

**Seaport Centre** is a ±636,907 Sq. Ft. campus, centrally located in Redwood City on the San Francisco Bay.

■ Space Available

# Amenities

 Fitness center

 On-Site Cafe



**SEAPORT CENTRE**

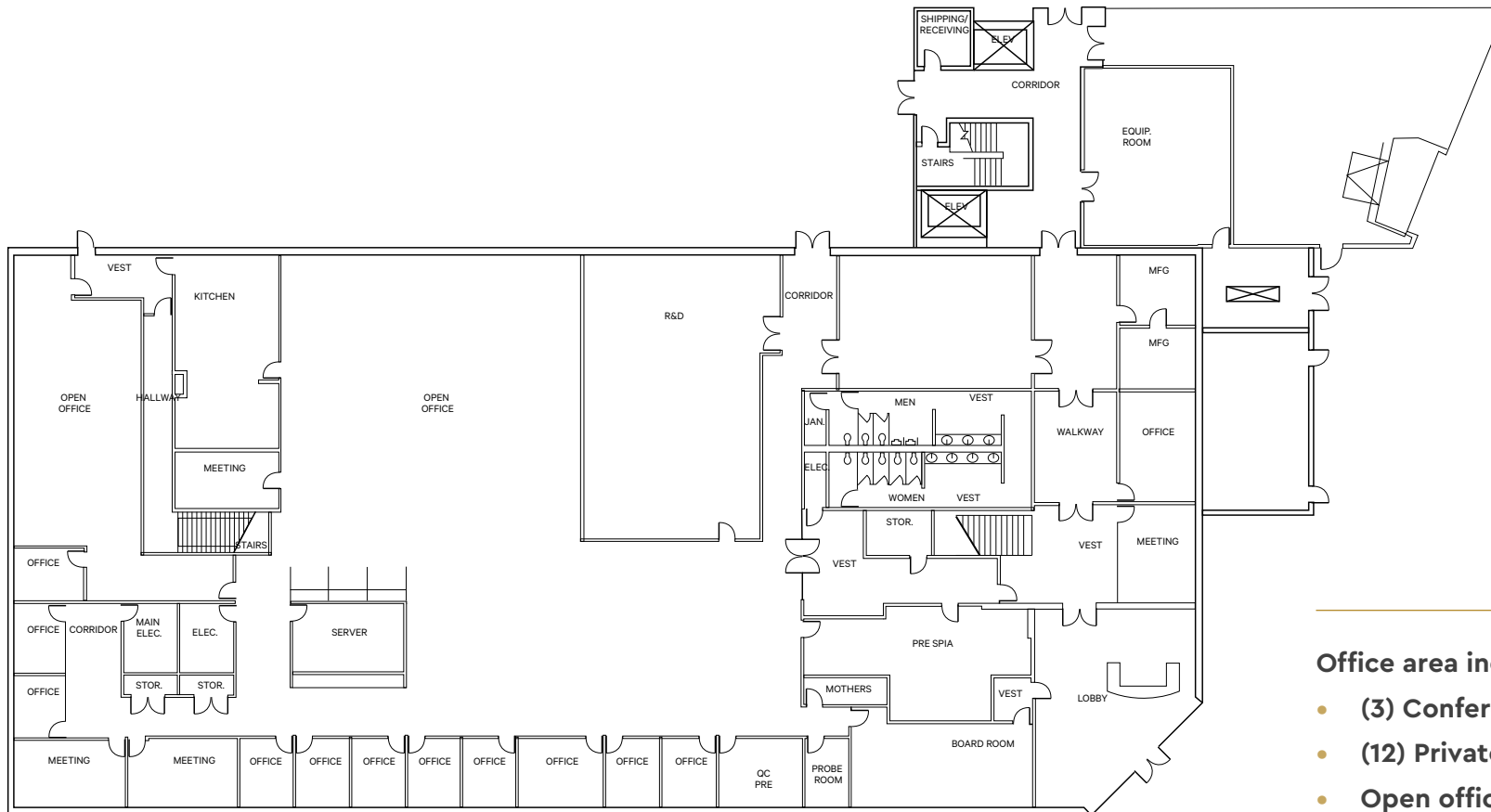
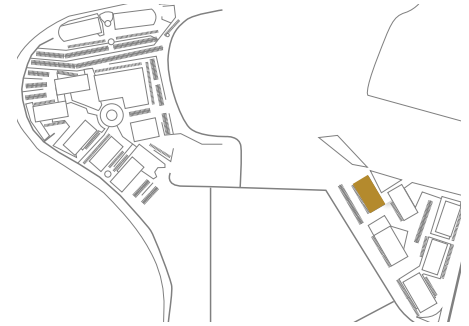
# **Spaces Shaped for Science**

**900 CHESAPEAKE DR, REDWOOD CITY**



# ±22,528 SF | First Floor

900 CHESAPEAKE DR | EXISTING OFFICE R&D

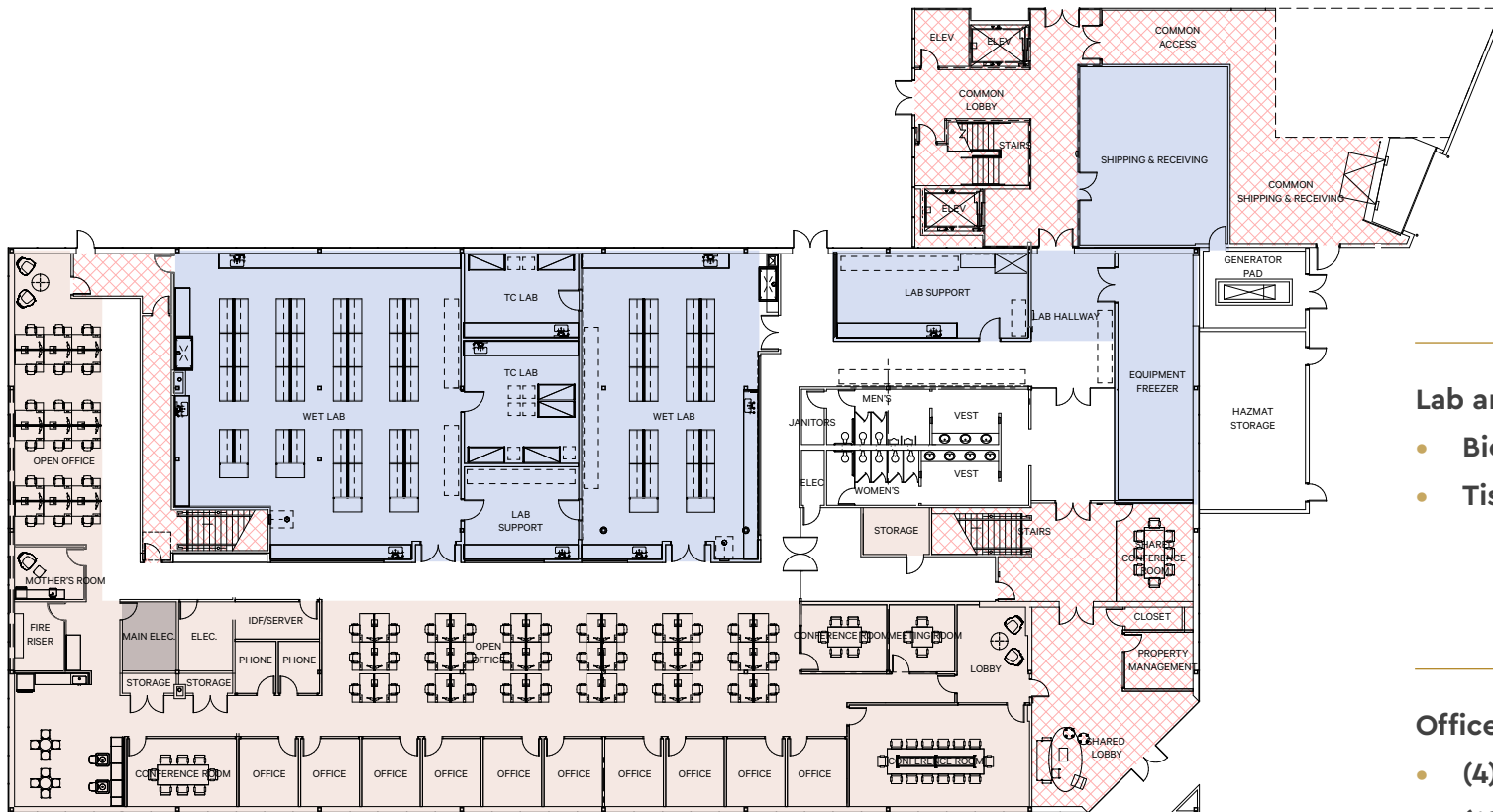
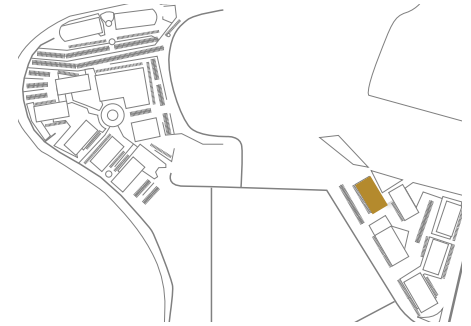


## Office area includes:

- (3) Conference rooms
- (12) Private Offices
- Open office area
- Large R&D room
- Break area

# ±22,528 SF | First Floor

900 CHESAPEAKE DR | SAMPLE OFFICE/LAB BUILDOUT



## Lab area includes:

- Biology lab
- Tissue culture suites

## Office area includes:

- (4) Conference rooms
- (10) Private Offices
- (2) Phone rooms
- Open office area
- Break room



© 2023 CHESAPEAKE

# SEAPORT CENTRE

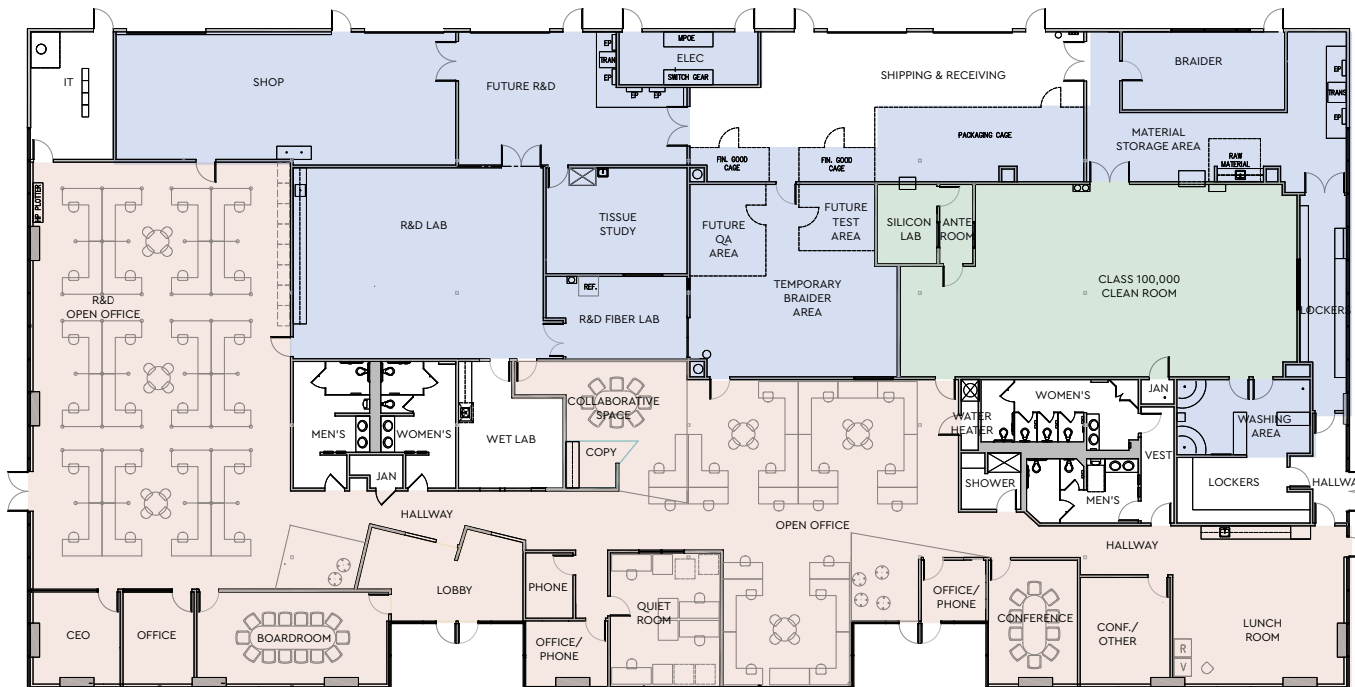
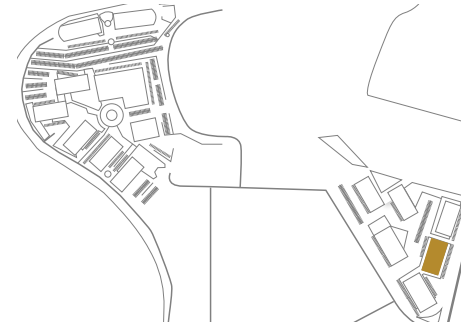
# Spaces Shaped for Science

**400 CHESAPEAKE DR, REDWOOD CITY**



# ±19,600 SF | Full Building

400 CHESAPEAKE DR



Lab Clean room Office

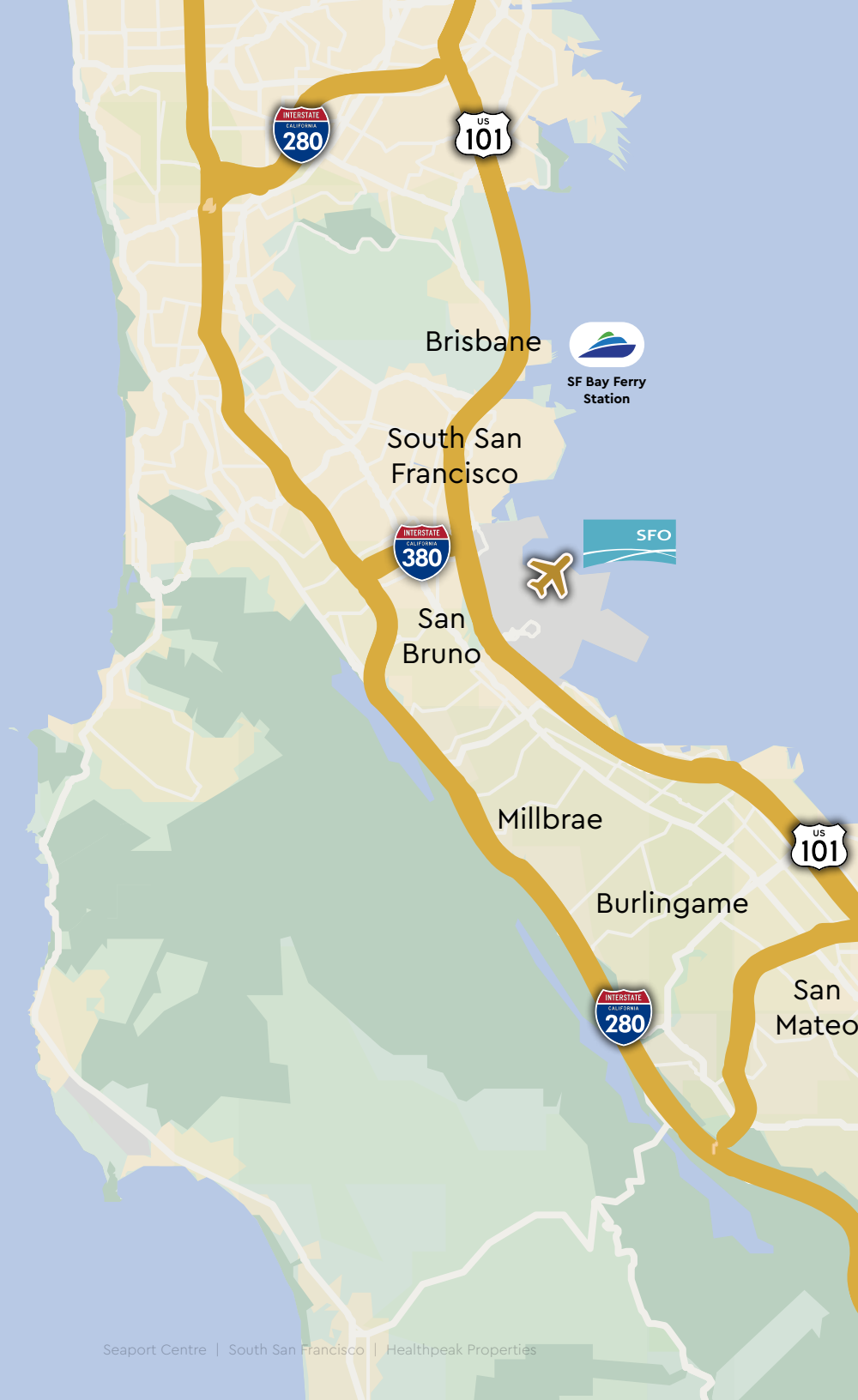
## Lab area includes:

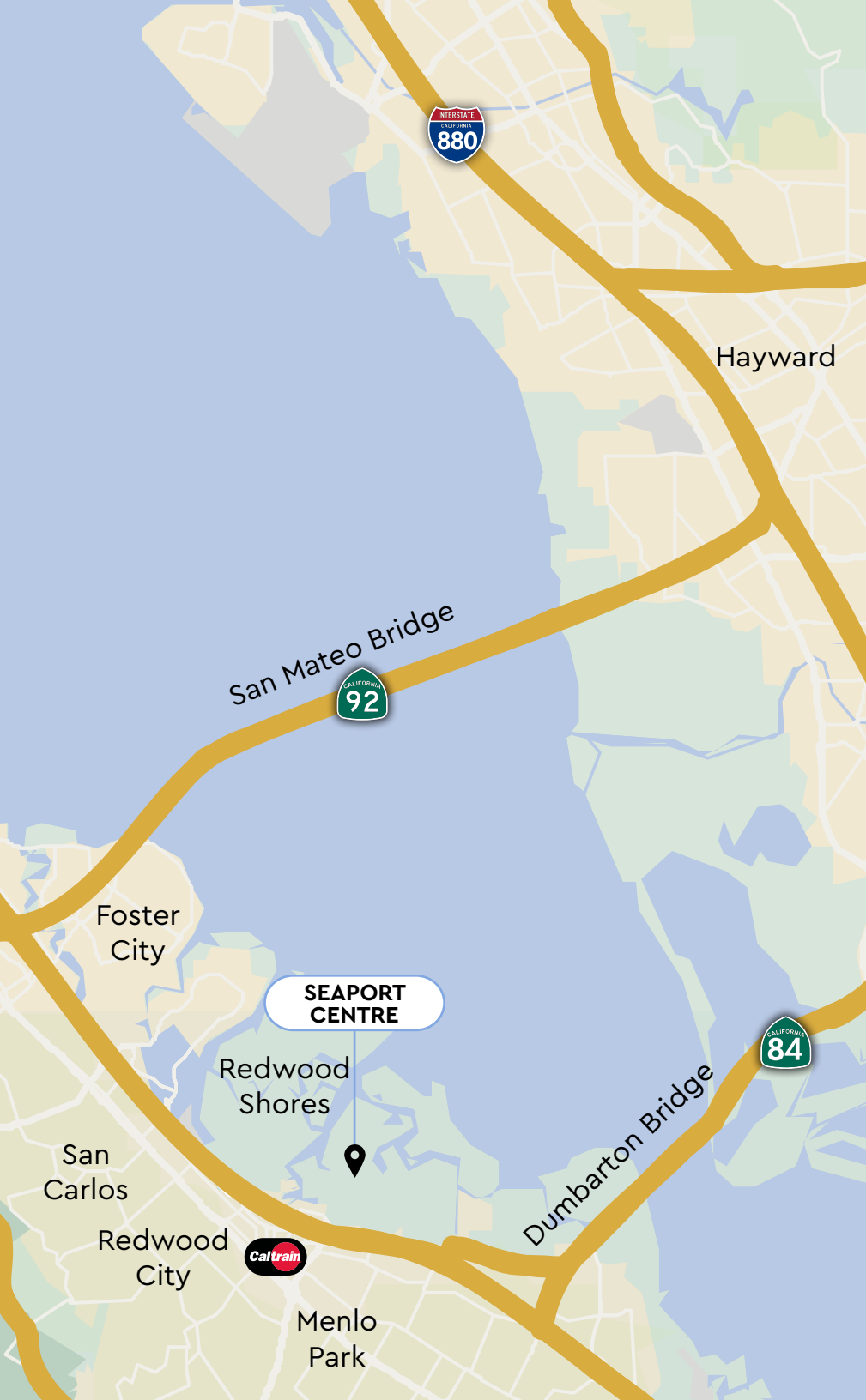
- Tissue study room
- Class 100K clean room

## Office area includes:

- (3) Conference rooms
- (5) Private Office/phone rooms
- Open office area
- Large R&D room
- Break room

# Location





# Extensive Transit Options



Seaport Centre  
Redwood Shores, CA 94063



## ACCESS

to 101



## 5 MIN

to San Mateo  
& Dumbarton Bridge



## 15 MIN

to SFO

## 25 MIN

to SJC



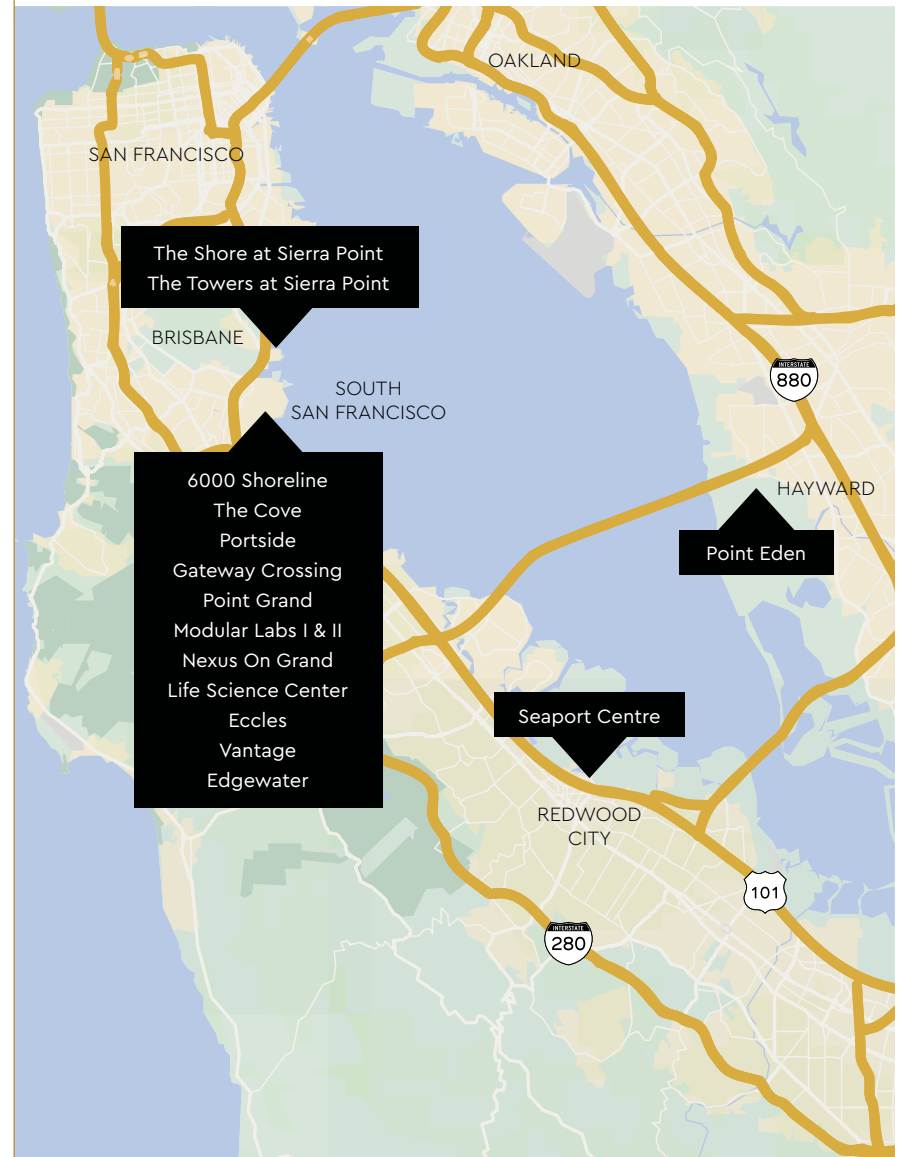
## DAILY SHUTTLE

to & from Caltrain

Healthpeak® | **DOC**  
LISTED  
NYSE

## A Powerful Partnership

Healthpeak's deep industry knowledge and flexible approach allows our tenants to thrive. Our fee-simple, long-term property ownership and portfolio scale positions us as a uniquely stable partner life science firms trust to support long-term growth.



### Deep Bay Area Roots

Almost **6.2 million** square feet of lab space, approximately **1.3 million** square feet of entitlements, and **84 properties** in the Bay Area.



Seaport Centre, Redwood City

### National Presence

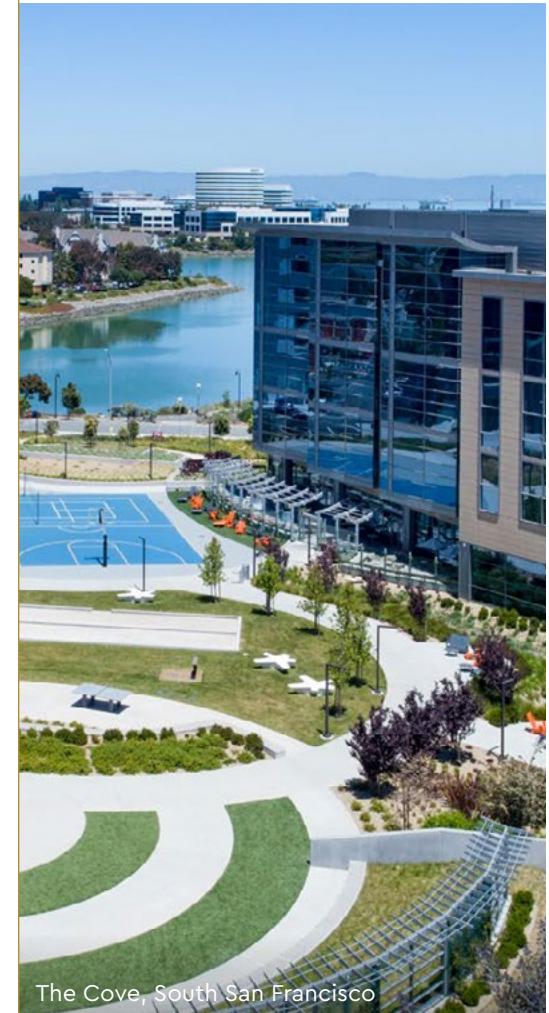
Over **12 million** square feet of lab space, approximately **1.6 million** square feet of entitlements, and **146 properties** Nationwide.



The Shore at Sierra Point, Brisbane

### Expert Developer

Experienced local management team that has developed over **3 million** square feet of lab space.



The Cove, South San Francisco

# SEAPORT CENTRE

Healthpeak® | DOC  
LISTED  
NYSE



## Chris Jacobs

Lic. 00900432

+1 650 577 2919

chris.jacobs@cbre.com

## Rick Friday

Lic. 01339335

+1 650 577 2932

rick.friday@cbre.com

## CBRE

1450 Chapin Avenue Suite 200  
Burlingame, CA 94010

+1 650 577 2900