



Premier Labs at **GATEWAY CROSSING**

651 Gateway Blvd | 201 Gateway Blvd | 225 Gateway Blvd | 2 Corporate Dr
South San Francisco, CA

© 2026 CBRE, Inc. All rights reserved.

HealthpeakBayArea.com

Healthpeak[®] | **DOC LISTED NYSE**

CBRE



Centrally located within the South San Francisco Life Science cluster



Close proximity to restaurants of varying cuisines, retail, fitness centers, range of hotels and the Oyster Point Marina



Walking distance to CalTrain station



Convenient access to Highway 101, public transportation and mid-peninsula residential communities



Brand new fitness center



Parking Ratio:
2.8 per 1,000 RSF

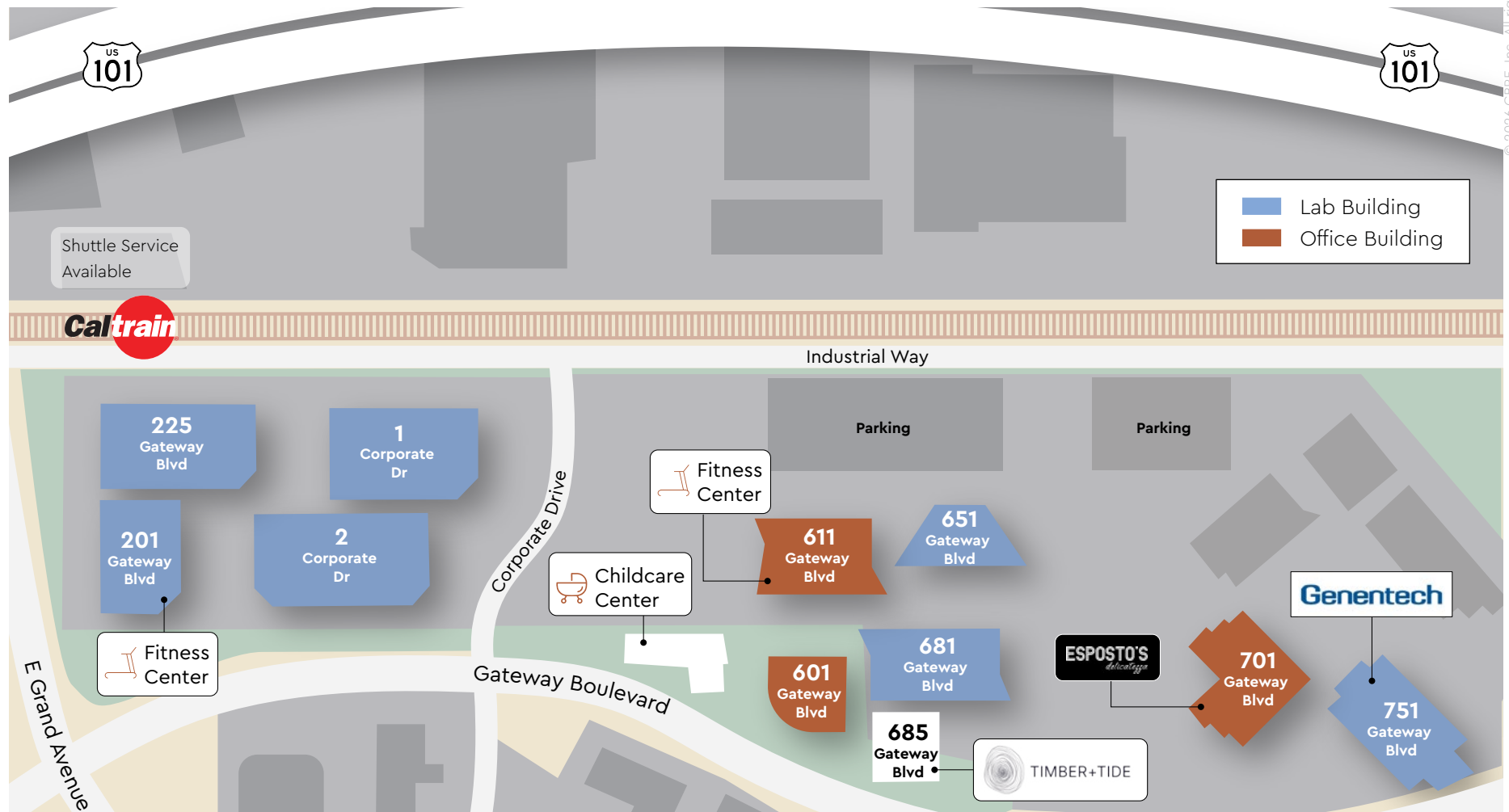
A Gateway to Discovery

Centrally located within the South San Francisco Life Science cluster, Gateway Crossing's biotechnology neighbors and Bay Area setting make it ideal for a variety of life science users.

At a Glance

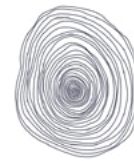
Gateway Boulevard runs directly off of Grand Avenue providing convenient access to Highway 101, public transportation and peninsula residential communities.

See more amenities at [HealthpeakBayArea.com](https://www.healthpeakbayarea.com)



On-site Amenities

We're committed to helping our tenants get the most out of their day — that's why our portfolio is equipped with multiple **state-of-the-art amenity centers** across South San Francisco.



TIMBER+TIDE
timberandtidesf.com

Timber & Tide amenity center



Seminar room



Fitness centers



Private dining



© 2026 CBRE, Inc. All rights reserved.

Board rooms



Conference rooms



Gateway Crossing Campus

LAB SPACE

■ Space Available

651 Gateway Blvd
±253,630 SF Available

201 Gateway Blvd
±26,553 SF Available

2 Corporate Dr
±45,912 SF Available

225 Gateway Blvd
±16,732 SF Available

±342,827 SF TOTAL AVAILABILITY



Premier Labs at
GATEWAY CROSSING



Spaces Shaped for Science

651 GATEWAY BLVD

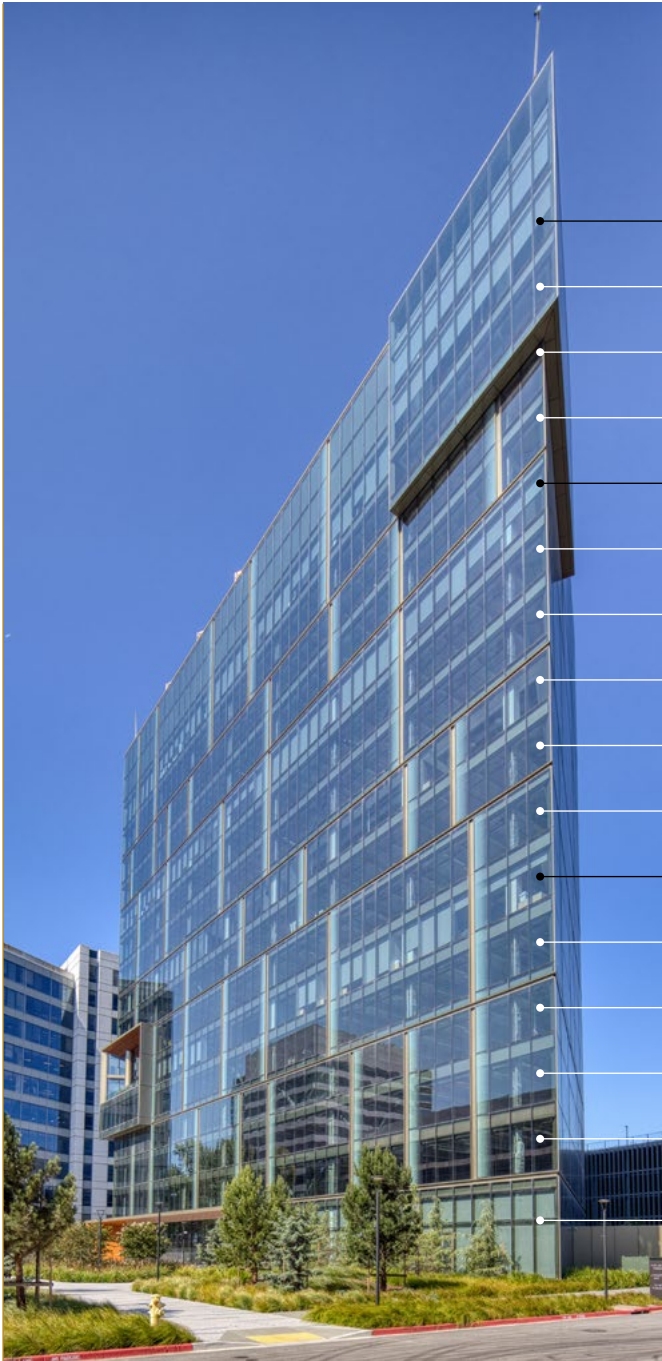


±253,630 SF lab/office space



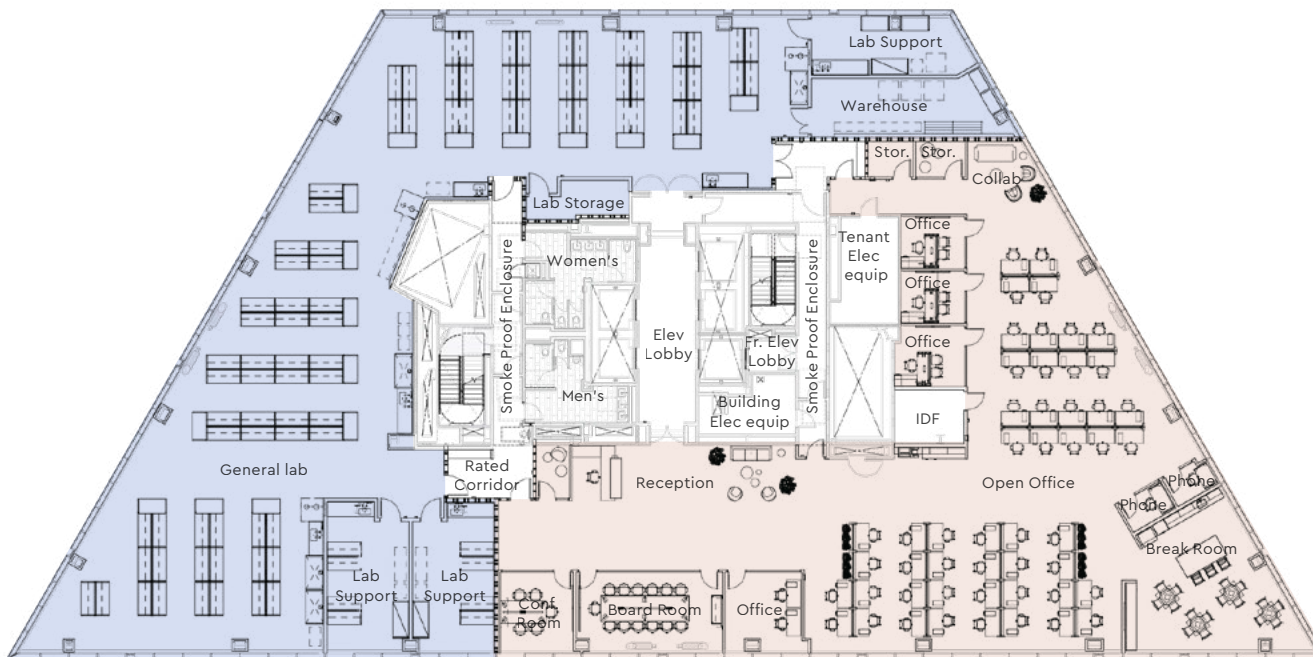
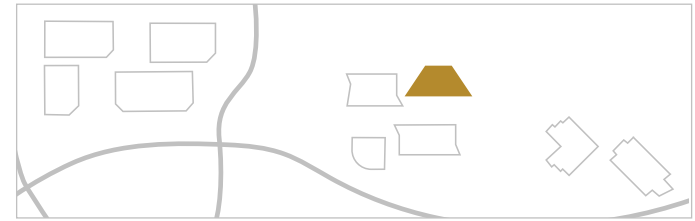
651 Gateway Boulevard, South San Francisco

16th Floor	Leased	
15th Floor	Shell	±22,344 SF
14th Floor	Shell	±22,947 SF
13th Floor	Shell	±21,905 SF
12th Floor	Leased	
11th Floor	Shell	±22,251 SF
10th Floor	Shell	±22,251 SF
9th Floor	Spec Suite	±21,905 SF
8th Floor	Shell	±21,905 SF
7th Floor	Shell	±11,061 SF
6th Floor	Leased	
5th Floor	Shell	±22,346 SF
4th Floor	Shell	±21,905 SF
3rd Floor	Shell	±21,905 SF
2nd Floor	Shell	±21,905 SF
1st Floor	Future Amenities	



±21,905 SF | Ninth Floor

651 GATEWAY BLVD | SPEC SUITE
Immediate Occupancy



Lab area includes:

- General labs
- Lab support

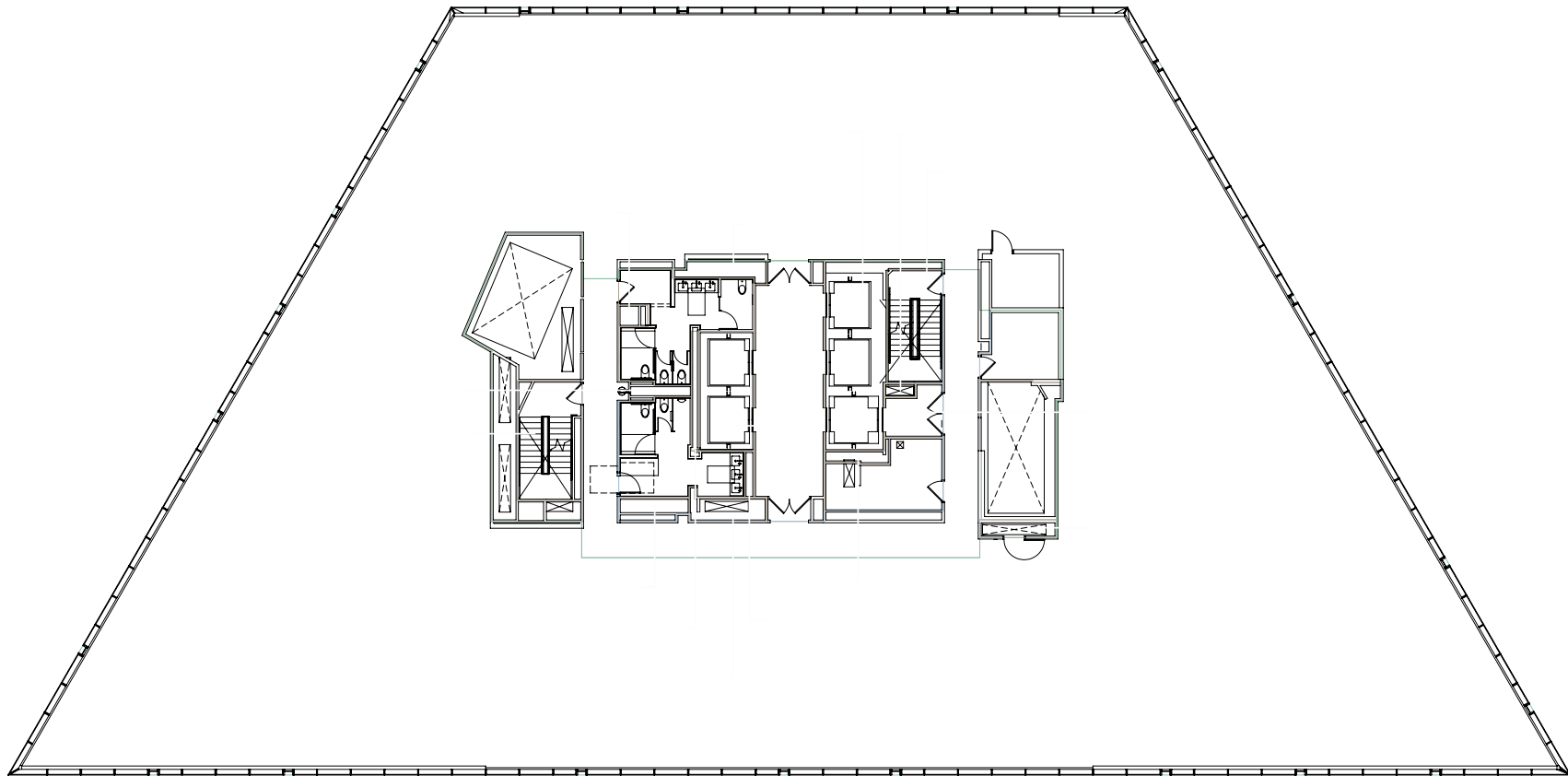
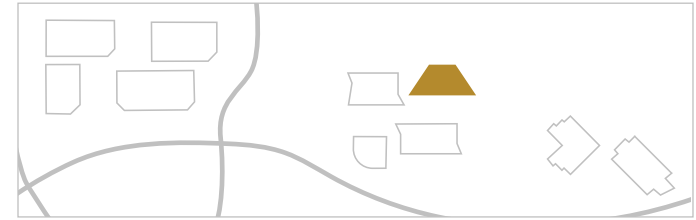
Office area includes:

- (1) Board room
- (1) Conference room
- (4) Private offices
- (2) Phone rooms
- Open office area
- Break room

Lab Office

±21,905 SF | Shell Condition

651 GATEWAY BLVD | REPRESENTATIVE FLOOR PLAN



Premier Labs at
GATEWAY CROSSING

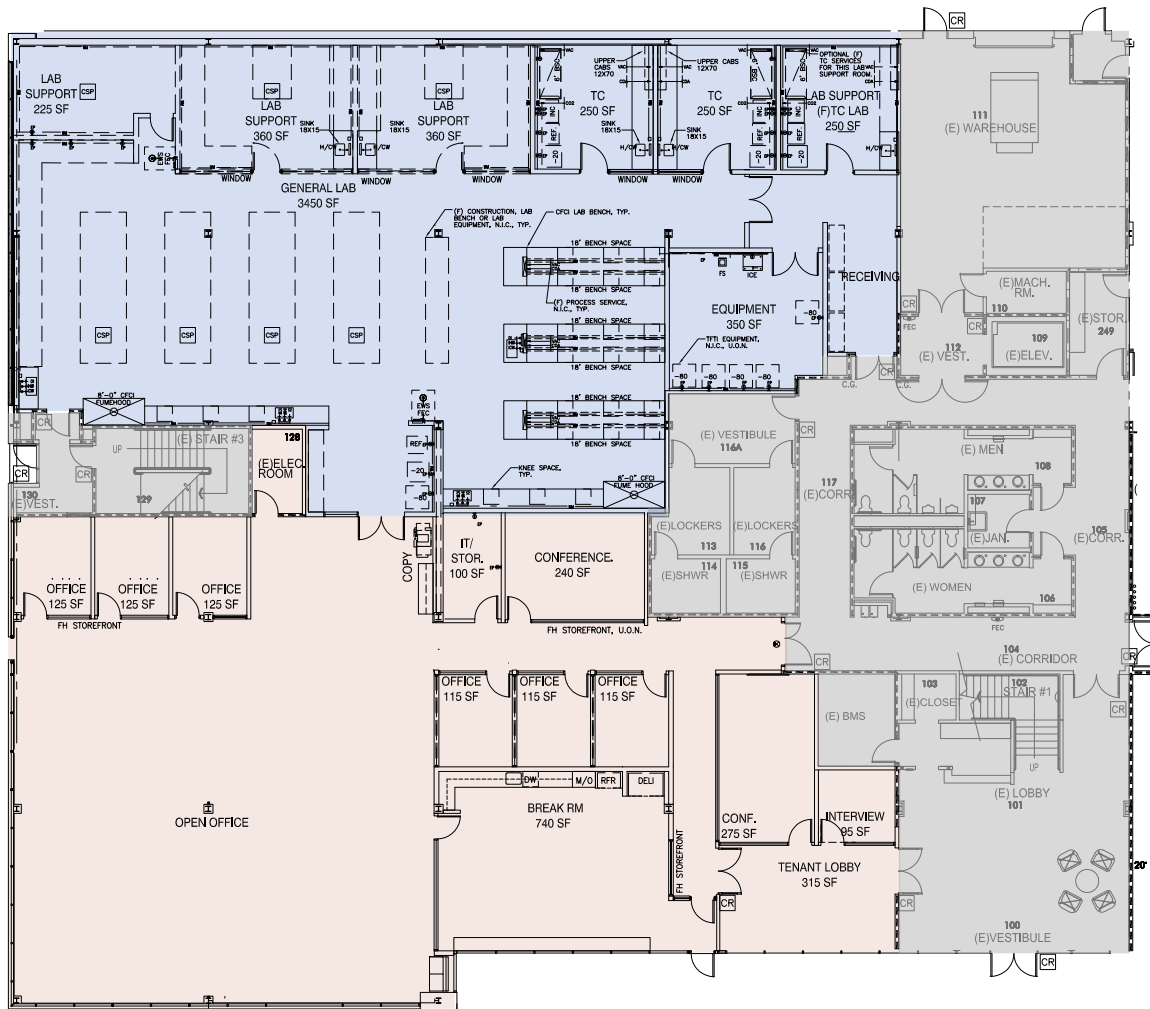
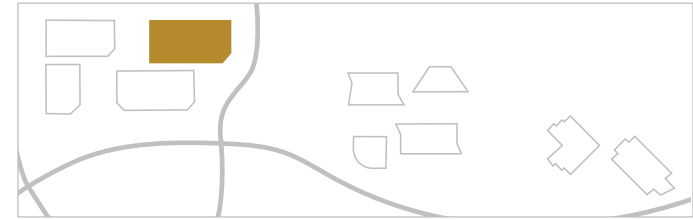
Spaces Shaped for Science

225 GATEWAY BLVD



±16,732 SF | First Floor

225 GATEWAY BLVD



Lab Office

Lab area includes:

- Biology labs
- Lab support
- Tissue culture suites
- (2) Two fume hoods
- House gases:
 - Vac, CDA, & Co2

Office area includes:

- Private offices
- Open office area

Premier Labs at
GATEWAY CROSSING

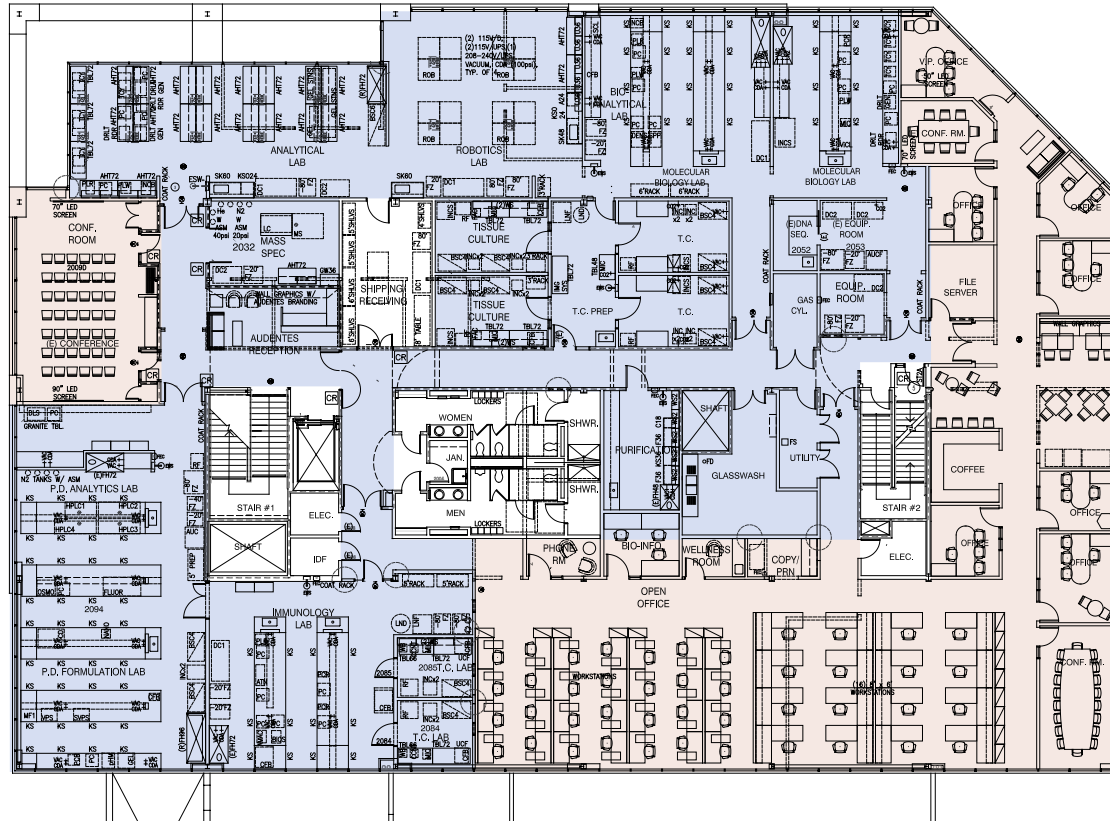
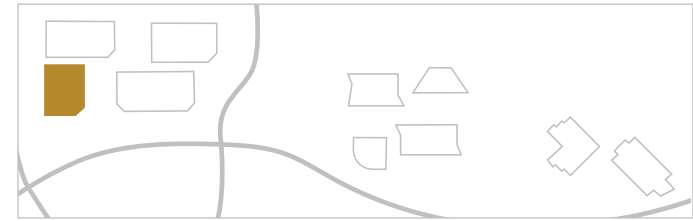
Spaces Shaped for Science

201 GATEWAY BLVD



±26,553 SF | Second Floor

201 GATEWAY BLVD



Lab area includes:

- Biology lab
- Tissue culture suites
- House gases:
 - Vac, CDA, He & N2

Office area includes:

- Large conference rooms
- Private offices
- Open office area

Premier Labs at
GATEWAY CROSSING

Spaces Shaped for Science

2 CORPORATE DR





Extensive Transit Options



Gateway Crossing,
South San Francisco, CA 94080



IMMEDIATE
access to 101



25 MIN
to downtown SF



9 MIN
to SFO



WALK TO
SSF CalTrain



SHUTTLE SERVICE

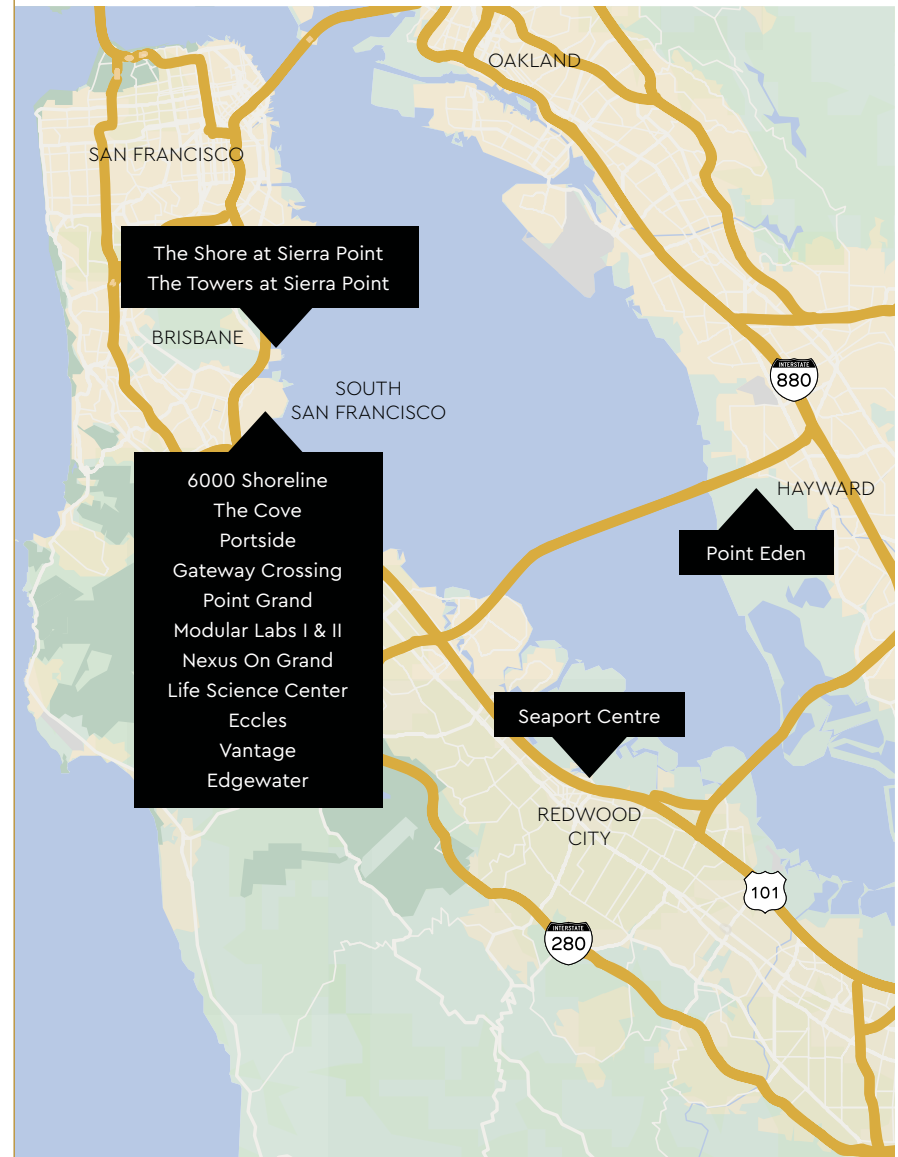
±10 MIN

Shuttle Service to Caltrain and BART

Healthpeak® | **DOC LISTED NYSE**

A Powerful Partnership

Healthpeak's deep industry knowledge and flexible approach allows our tenants to thrive. Our fee-simple, long-term property ownership and portfolio scale positions us as a uniquely stable partner life science firms trust to support long-term growth.



Deep Bay Area Roots

Over **7.5 million** square feet of lab and office space, approximately **1.3 million** square feet of entitlements, and over **100 properties** in the Bay Area.



Seaport Centre, Redwood City

National Presence

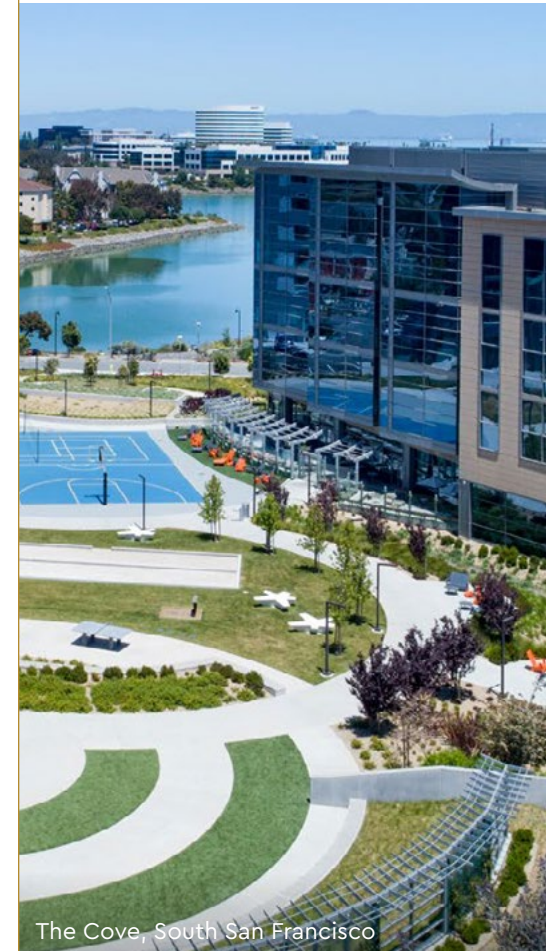
Over **12 million** square feet of lab space, approximately **1.6 million** square feet of entitlements, and over **150 properties** nationwide.



The Shore at Sierra Point, Brisbane

Expert Developer

Experienced local management team that has developed over **3 million** square feet of lab space.



The Cove, South San Francisco

Premier Labs at **GATEWAY CROSSING**

Healthpeak® | **DOC
LISTED
NYSE**

Chris Jacobs

Lic. 00900432

+1 650 577 2919

chris.jacobs@cbre.com

Rick Friday

Lic. 01339335

+1 650 577 2932

rick.friday@cbre.com

CBRE

1450 Chapin Avenue Suite 200
Burlingame, CA 94010

+1 650 577 2900