

SEAPORT CENTRE

400 Chesapeake Dr | 900 Chesapeake Dr
Redwood City, CA



HealthpeakBayArea.com

Healthpeak® | DOC LISTED NYSE

CBRE



15-building campus environment
that fosters community



Idyllic San Francisco
Bay setting



Access to Bay Trail with scenic
walking, biking paths and
recreation areas



Conveniently located to
mid-peninsula residential
communities



Parking Ratio:
3.0 per 1,000 RSF

Discover New Horizons



With proximity to major academic institutions and a significant number of life science companies, Seaport Centre is Redwood City's premier, bayside business park – ideal for inspiration and innovation.

At a Glance

Seaport Centre is a ±636,907 Sq. Ft. campus, centrally located in Redwood City on the San Francisco Bay.

 Space Available

Amenities

-  Fitness center
-  On-Site Cafe



SEAPORT CENTRE

Spaces Shaped for Science

900 CHESAPEAKE DR

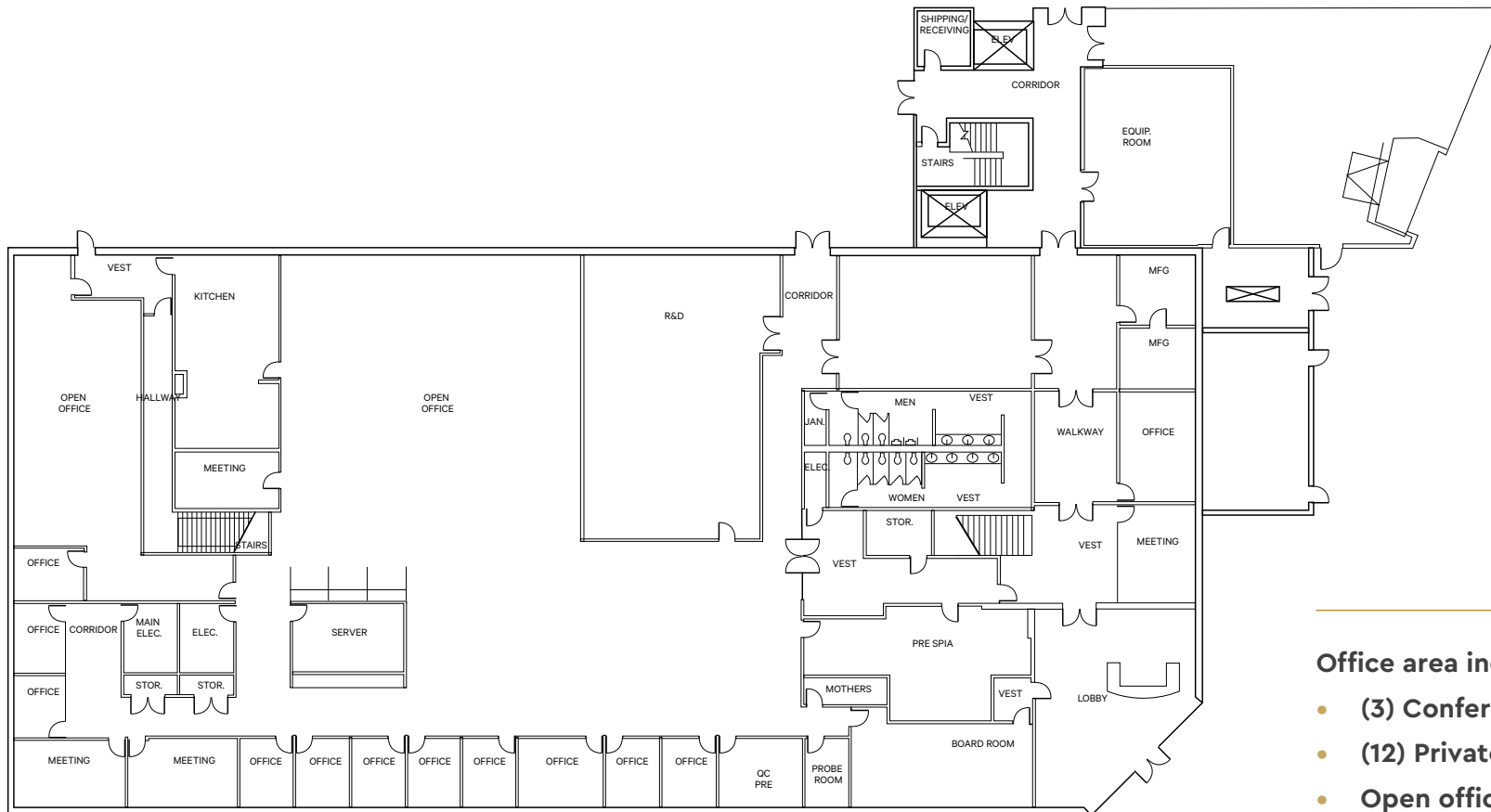
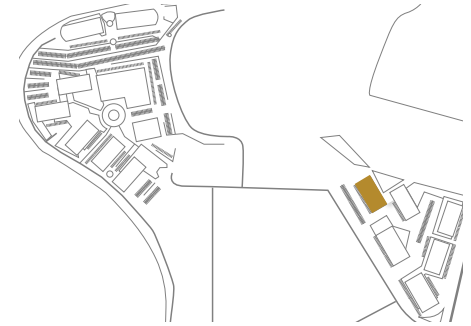


±22,500 - 47,000 SF AVAILABLE



±22,528 SF | First Floor

900 CHESAPEAKE DR | EXISTING OFFICE R&D

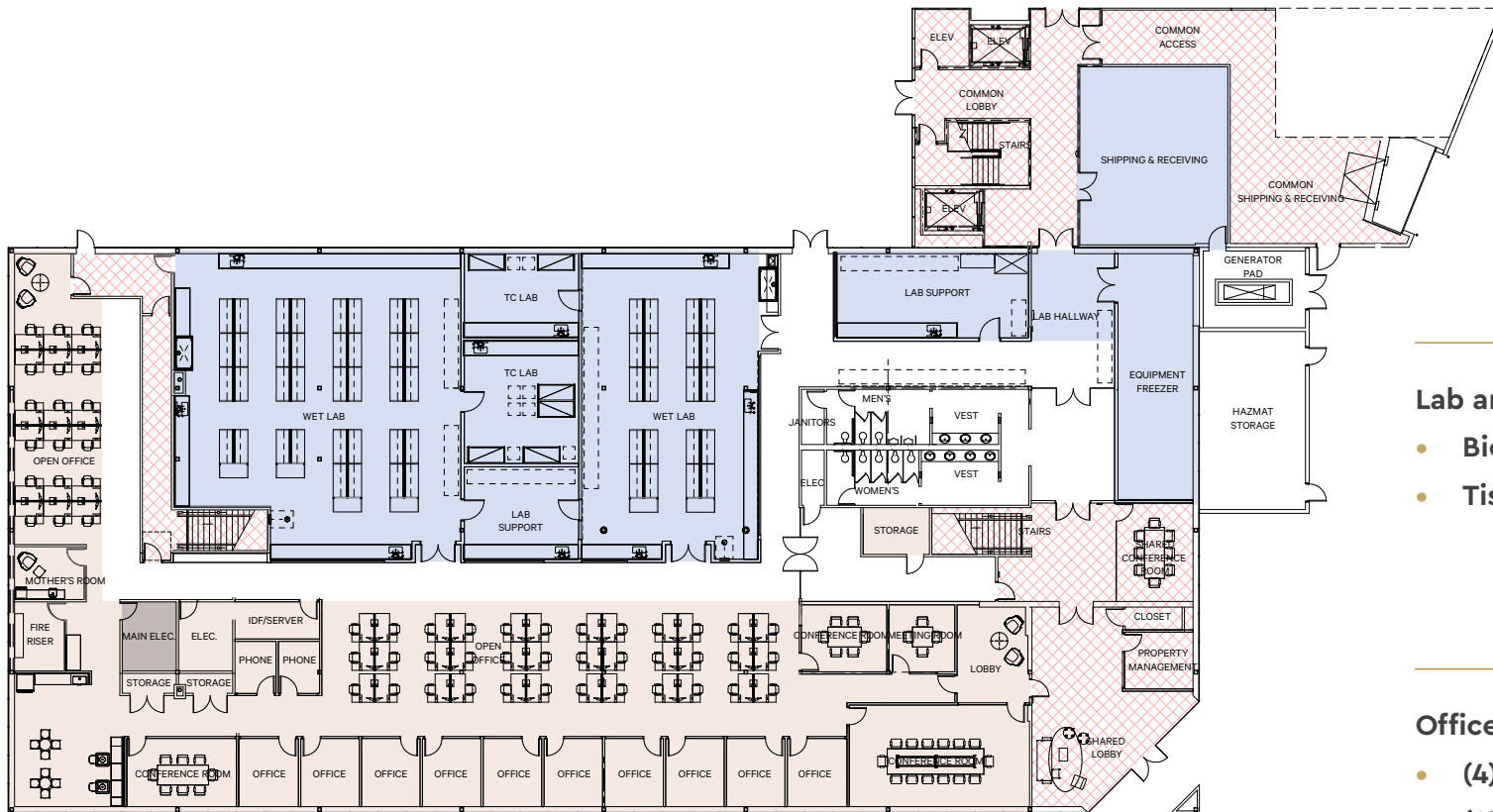
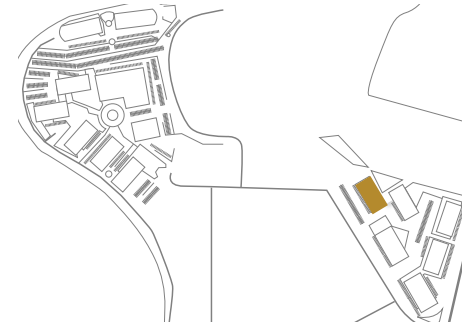


Office area includes:

- (3) Conference rooms
- (12) Private Offices
- Open office area
- Large R&D room
- Break area

±22,528 SF | First Floor

900 CHESAPEAKE DR | SAMPLE LAB/OFFICE BUILDOUT



Lab area includes:

- **Biology lab**
- **Tissue culture suites**

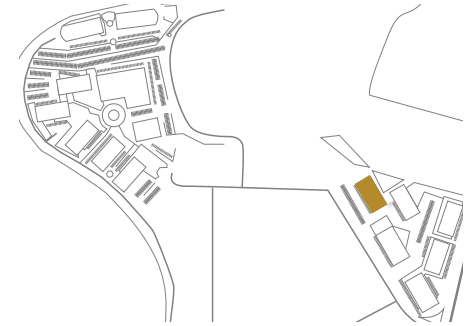
Office area includes:

- **(4) Conference rooms**
- **(10) Private Offices**
- **(2) Phone rooms**
- **Open office area**
- **Break room**

Lab Office

±24,454 SF | Second Floor

900 CHESAPEAKE DR | EXISTING LAB/OFFICE



Lab area includes:

- Biology lab
- Chemistry lab
- Tissue culture suites

Office area includes:

- (4) Conference rooms
- (19) Private Offices
- (2) Huddle rooms
- Open office area
- Break area

Lab Office

SEAPORT CENTRE

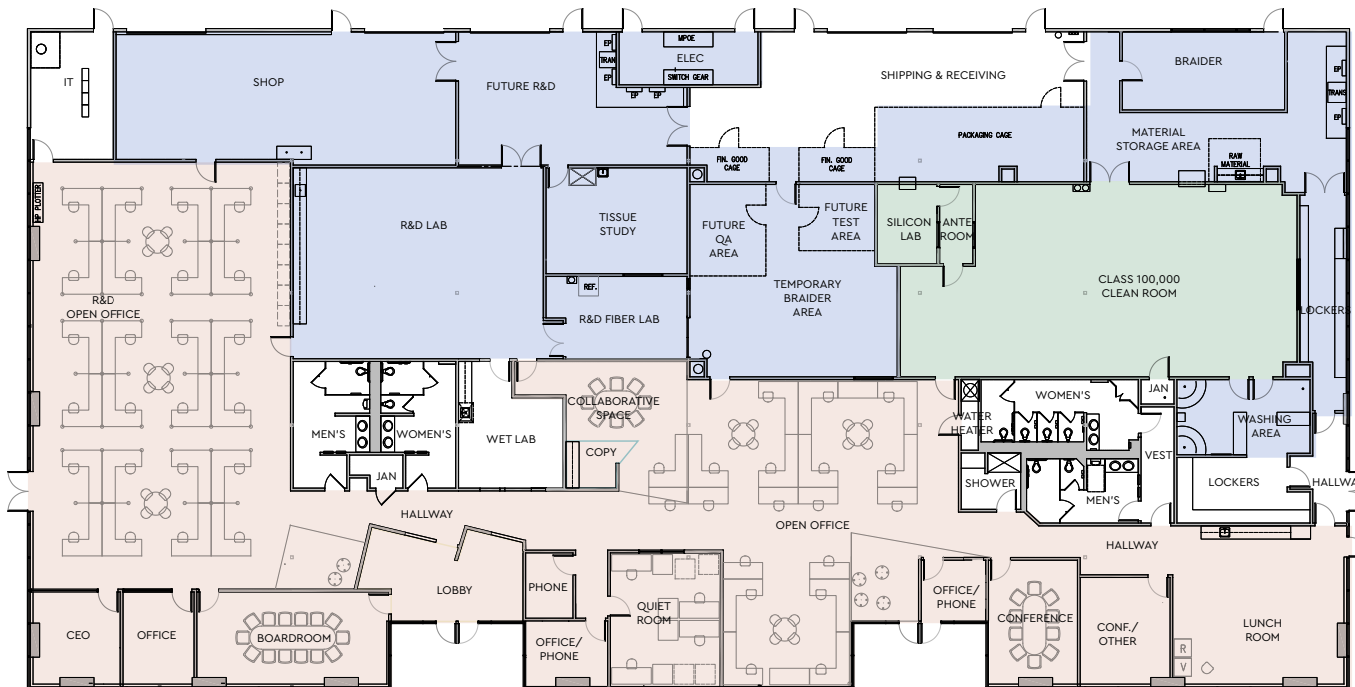
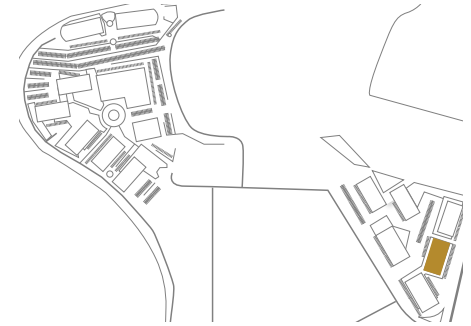
Spaces Shaped for Science

400 CHESAPEAKE DR



±21,863 SF | Full Building

400 CHESAPEAKE DR



■ Lab ■ Clean room ■ Office

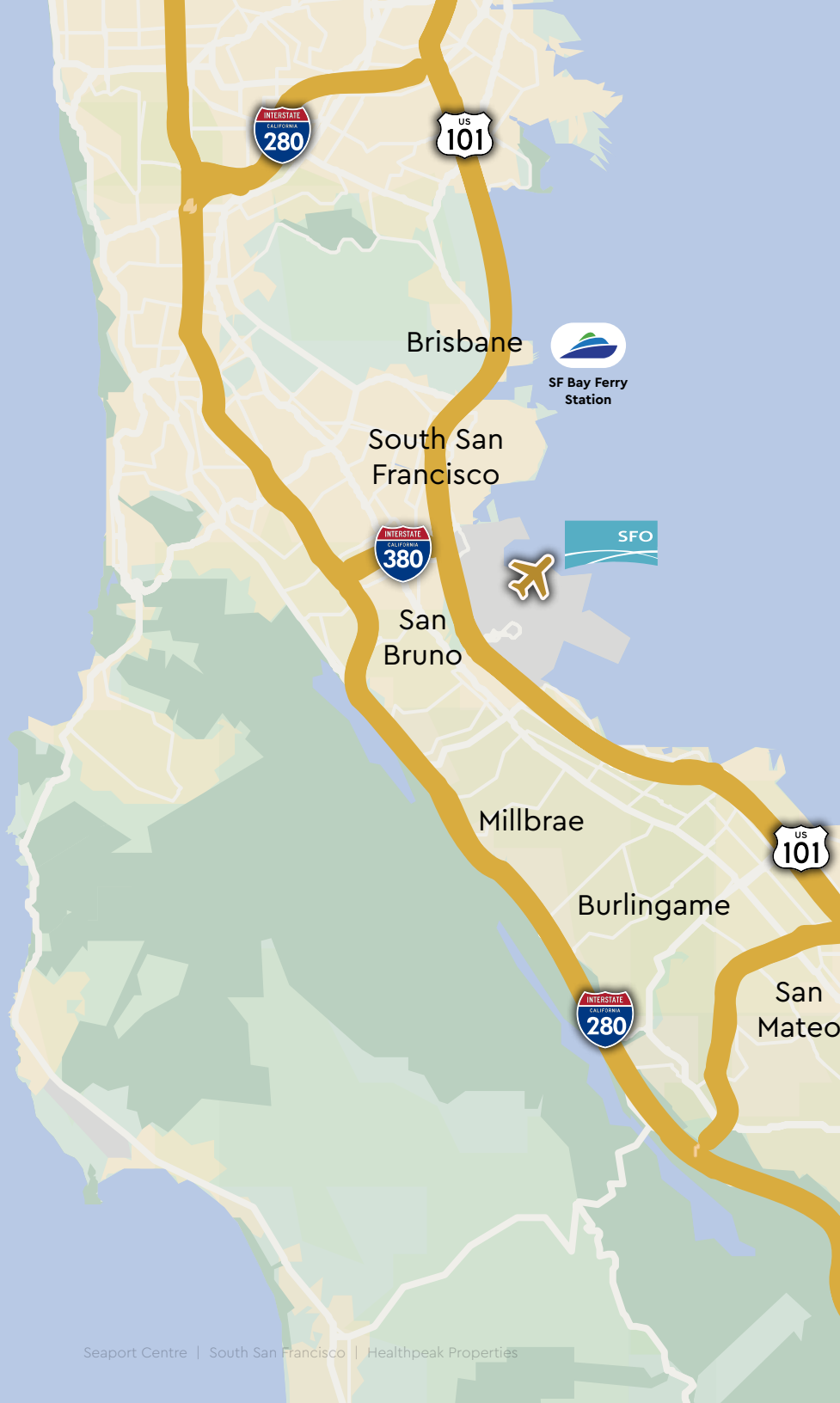
Lab area includes:

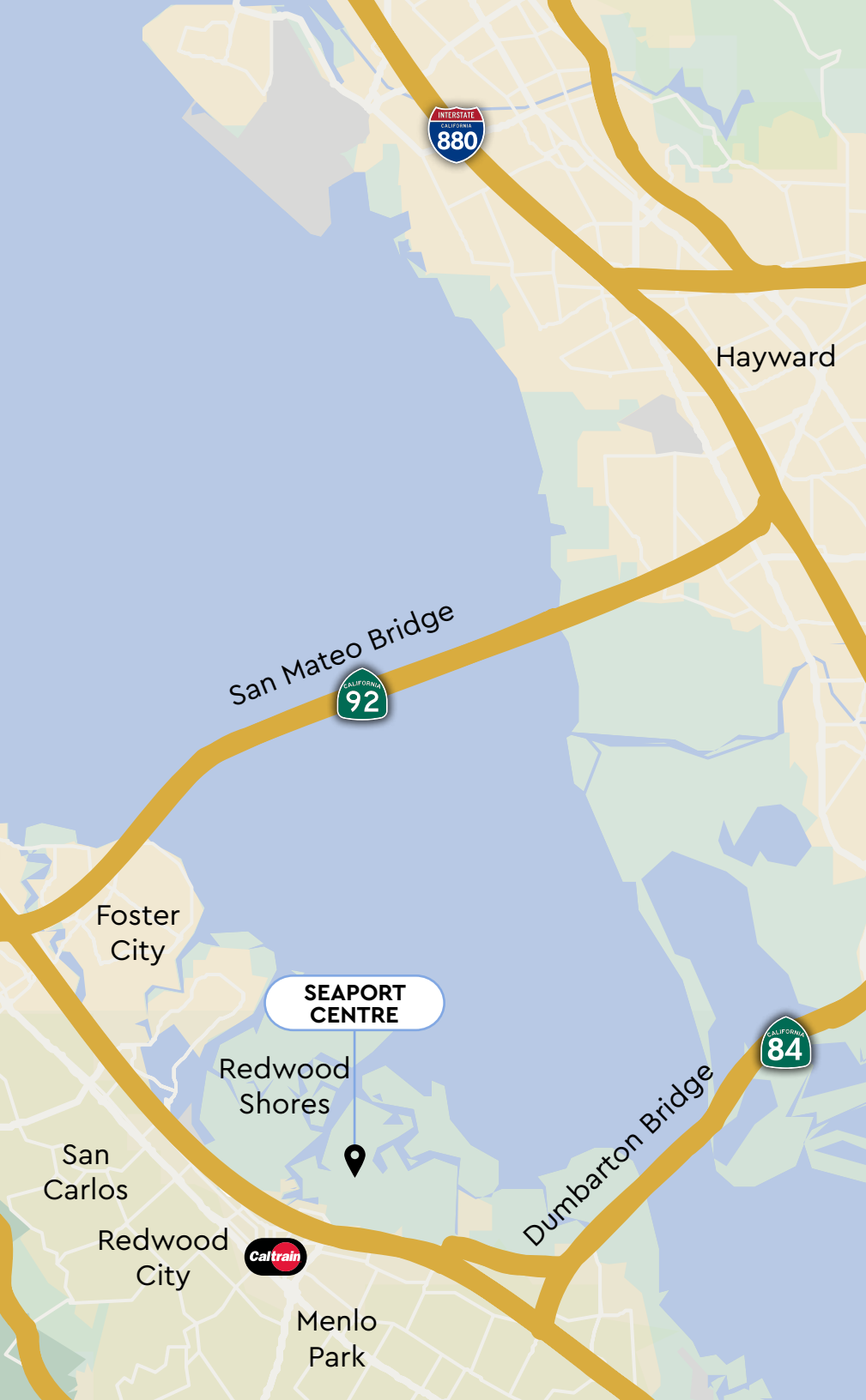
- Tissue study room
- Class 100K clean room

Office area includes:

- (3) Conference rooms
- (5) Private Office/phone rooms
- Open office area
- Large R&D room
- Break room

Location





Extensive Transit Options



Seaport Centre
Redwood Shores, CA 94063



ACCESS

to 101



5 MIN

to San Mateo
& Dumbarton Bridge



15 MIN

to SFO



DAILY SHUTTLE

to & from Caltrain

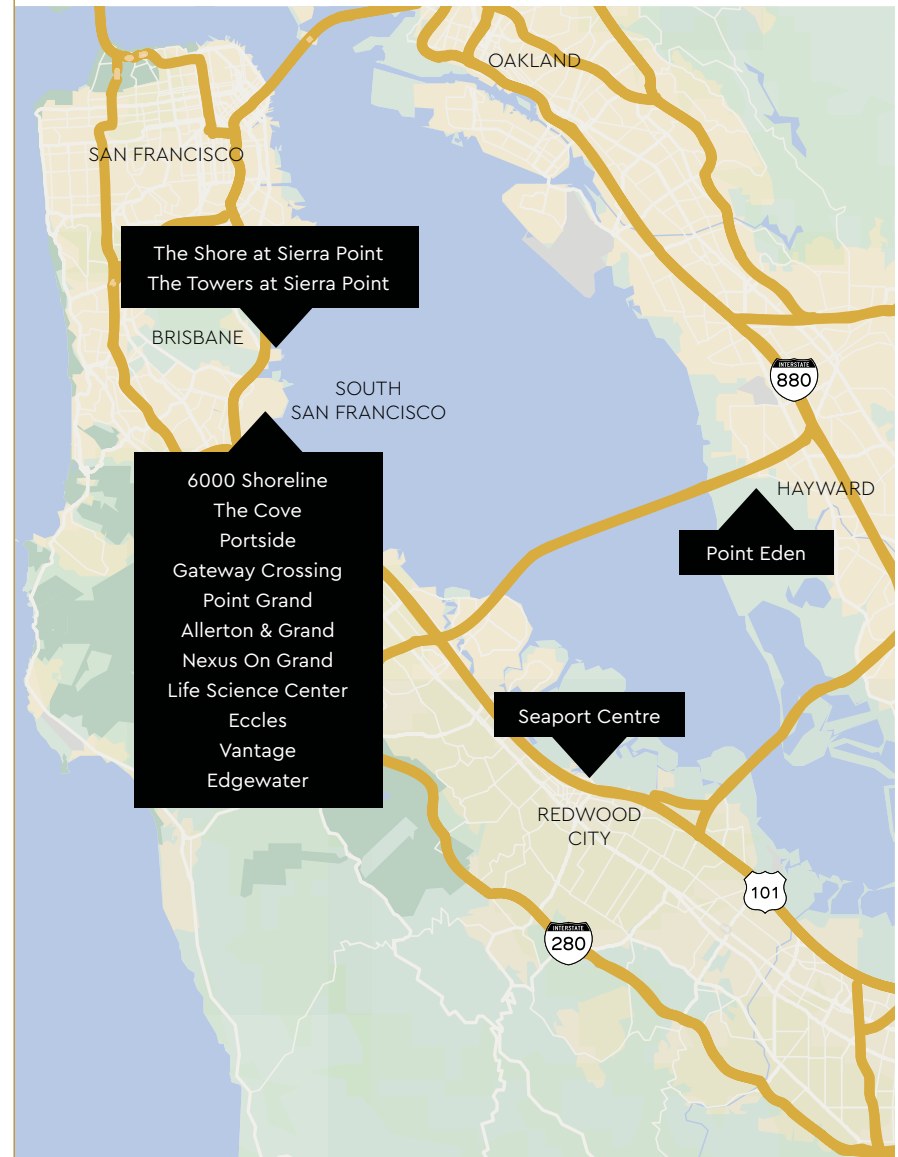
25 MIN

to SJC

Healthpeak® | **DOC LISTED NYSE**

A Powerful Partnership

Healthpeak's deep industry knowledge and flexible approach allows our tenants to thrive. Our fee-simple, long-term property ownership and portfolio scale positions us as a uniquely stable partner life science firms trust to support long-term growth.



Deep Bay Area Roots

Over **7.5 million** square feet of lab and office space, approximately **1.3 million** square feet of entitlements, and over **100 properties** in the Bay Area.



Seaport Centre, Redwood City

National Presence

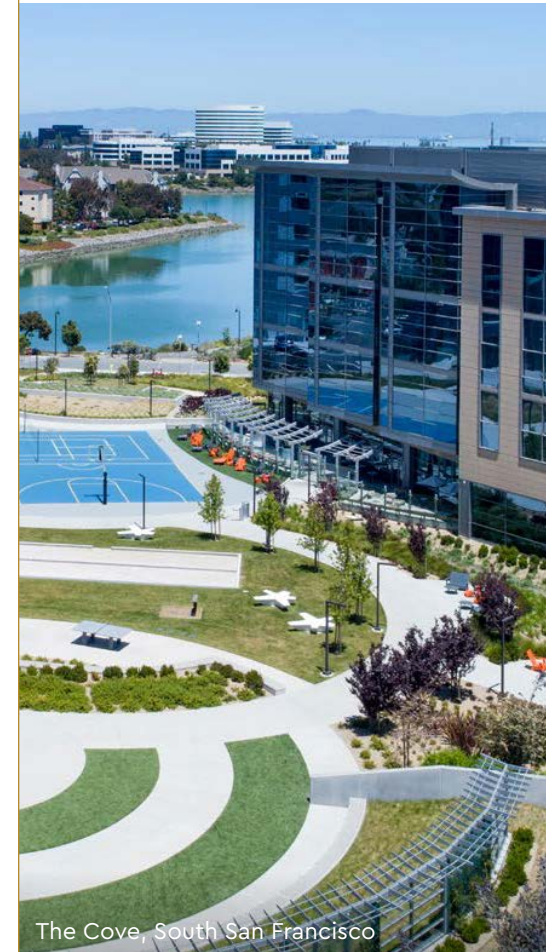
Over **12 million** square feet of lab space, approximately **1.6 million** square feet of entitlements, and over **150 properties** nationwide.



The Shore at Sierra Point, Brisbane

Expert Developer

Experienced local management team that has developed over **3 million** square feet of lab space.



The Cove, South San Francisco

SEAPORT CENTRE

Healthpeak® | DOC
LISTED
NYSE



Chris Jacobs

Lic. 00900432

+1 650 577 2919

chris.jacobs@cbre.com

Rick Friday

Lic. 01339335

+1 650 577 2932

rick.friday@cbre.com

CBRE

1450 Chapin Avenue Suite 200
Burlingame, CA 94010

+1 650 577 2900